

dekodur®

ARCHITECTURAL METALS



top innovator
2021



ARCHITECTURAL METALS

High Pressure Laminates with a Real Metal Surface

A collection of High Pressure Laminates with a real metal surface and phenolic paper backing. **dekodur** Architectural Metals are 2440 x 1220 mm and 3050 x 1220 mm sheets (thickness 0,8 – 0,9 mm) in Aluminum, Stainless Steel or Copper; featuring embossing, hand painting, etching, and other innovative techniques to enhance the look of metals. High quality design solutions are its trademark.

dekodur commercial spaces where durability of design reigns supreme. As experts in surfaces that remain abrasion resistant, in addition to performance, **dekodur** Architectural Metals meet safety and material standards. Ideal for hospitality, healthcare, retail, institutional, and commercial design interiors.

PREMIUM DURABILITY

Architectural Metals are engineered to withstand scuffs, cuts, chemical exposures and collision impact without showing visible signs of wear and tear (according to DIN EN 438)

REAL METAL SURFACES

Constructed from aluminum, copper and stainless steel surfaces

DISTINCTLY UNIQUE

Features embossed, etched and hand painted treatments to enhance real metal surfaces



FEATURES



Real metal surfaces



Embossing, etching, and hand painting techniques



Suitable for a variety of applications



Counterbalancing required for HPLs



Abrasion resistant



Easy to clean surface



Wide range of class A fire rated designs



Protective coat added to most products

Solving Your Design Needs

- 1 HPLs (High Pressure Laminates) with Real Metal Surfaces**
available in real aluminum and copper surfaces with a phenolic paper backing. Like other HPLs, counterbalancing is required to prevent warping of the substrate.
- 2 High Quality, Handmade Designs**
dekodur Architectural Metals offer design flexibility and are available as flat sheets or with a combination of embossed designs and a finish.
- 3 Suitable for a Variety of Applications**
dekodur Architectural Metals are suitable for a variety of vertical applications including wall panels, accent walls, reception desks, store fixtures, point-of-purchase (POP) displays, and more.
- 4 Protective Coating for Durable Surfaces**
Most products are coated with a lacquer to ensure durability and abrasion resistance. Polished finishes are anodized and will not tarnish. All **dekodur** Architectural Metals are also covered with a clear peel off masking to protect the finish. This masking should be left on during fabrication to avoid damaging the surface.
- 5 Eco-Friendly Options Available**
dekodur Architectural Metals made from pre-consumer materials that are phenol-free and CO2 neutral. The core is made of 100 % biological secondary components obtained from re-newable resources and is fully recyclable (more information: [dekodur-eco](#)).
- 6 Low Minimum Order Quantities**
Whether you need one sheet for a finishing touch or 100 for your project, we've got you covered. Stocked items are ready to ship within 1-2 weeks.
- 7 Shipped to You from an FSC Certified Facility**
Manufacturing facility is certified according to FSC standards which enables us to have the "hands on" control necessary to maintain the high standards customers expect from us. Metal sheets will be thoroughly inspected by our Quality Control Team before we ship your order.



ARCHITECTURAL METAL

ALUMINUM

COPPER

STEEL

HAND PAINTED

SPECIAL ORDER

BRUSHED ALUMINUM A 245

Choose from a Variety of Real Metal Surfaces

With dozens of options to choose from, **dekodur** Architectural Metals are the perfect high-end solution for your application that can be used as wall panels, accent walls, reception desks, point-of-purchase (POP) displays, store fixtures, and more. We can help you find which one is best for your project!

ALUMINUM COLLECTION

All Aluminum finishes are available in flat sheets or with embossed designs added. Most finishes are lacquered for abrasion resistance. The polished finishes are anodized.

COPPER COLLECTION

Copper laminates, with selected popular embossed designs, are lacquered and come with clear protective film for ease in processing.

STEEL COLLECTION

HPL with genuine stainless steel surface. Whenever the emphasis is on functionality, quality and extraordinary interior design, stainless steel offers an ideal surface material.

HAND PAINTED COLLECTION

As their name implies, the Unique Art Collection is truly a unique work-of-art that offers rich colors and materials in their design. They are hand painted by artists using techniques that allow for repeatability. The artistic value and nuances of hand painting are evident when using multiple sheets. As a result, it should be noted that slight differences will be seen from sheet to sheet. Protected with a high-quality lacquer process to ensure durability, these laminates can be used in both low- and high-traffic areas.

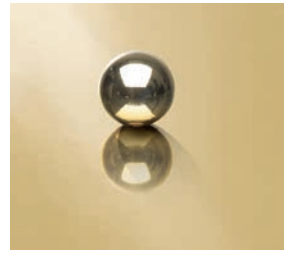


ALUMINUM

All Aluminum finishes are available in flat sheets or with embossed designs added to the finish. Most finishes are lacquered for abrasion resistance. The polished finishes are anodized and will not tarnish.



Mirror Silver
A 210



Mirror Gold
A 211



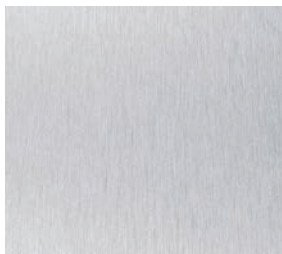
Mirror Copper
A 212



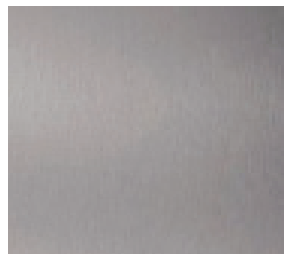
Mirror Grey
A 216



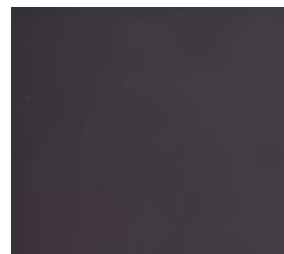
Blue Black Mirror
A 217



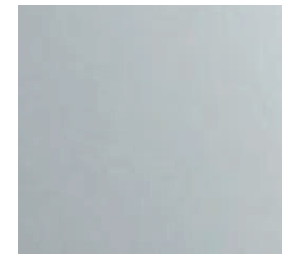
Aluminum Silver
brushed A 245



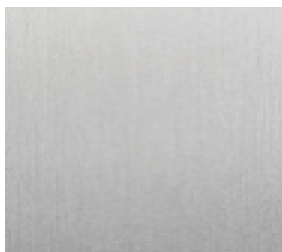
Stainless Color Brushed
A 256



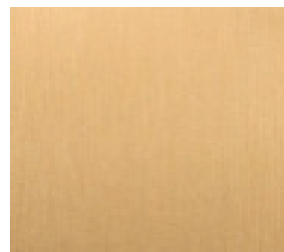
Blue Black Matte
A 249



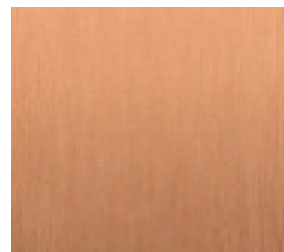
Silver Fine Matte
A 241



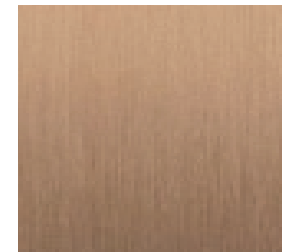
Silver brushed
A 350 SR



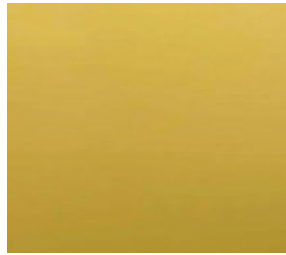
Gold brushed
A 351 SR



Copper brushed
A 352 SR



Bronze brushed
A 353 SR



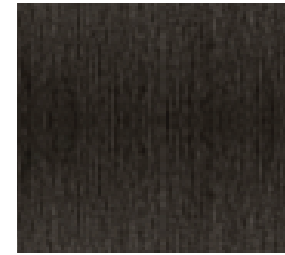
Dark Gold Unbrushed
A 231



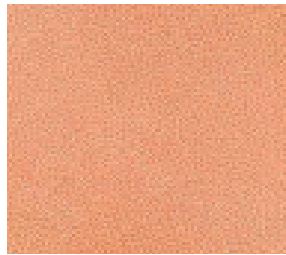
Rosé Mill Finish
A 232



Grey Butler Finish
A 233



Black Butler Finish
A234



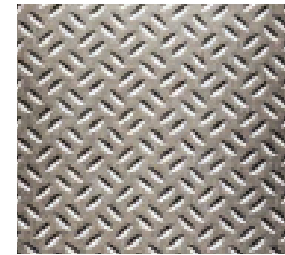
Wide Groove Crosswise
A 252 603



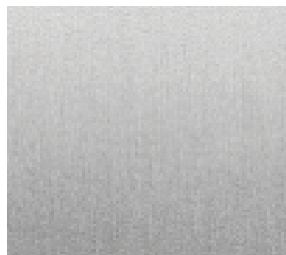
Copper Fine Matt
A 242



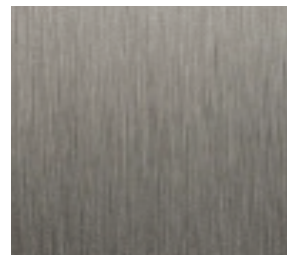
Grey Bark
A 248 BKE



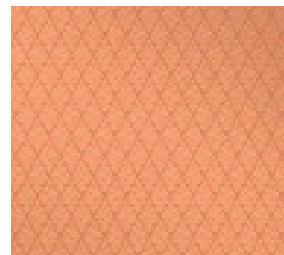
Stainless Color
Barleycorn A 256 GEK



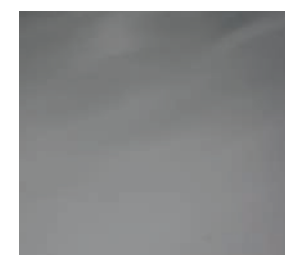
Silver Brushed
A 480 HSR



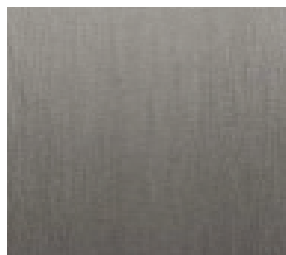
Steel Tone Brushed
A 486 HSR



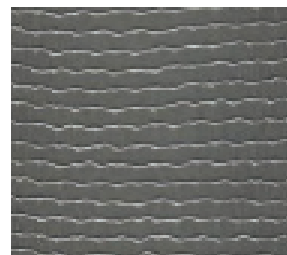
Mirror Copper Diamond
A 212 DIA



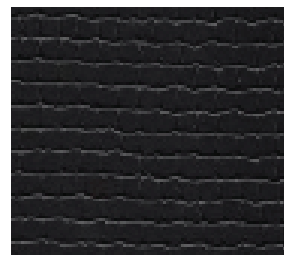
Rust
A 248 RST



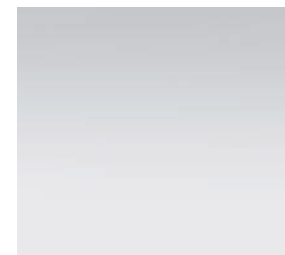
Stainless Steel
Colour brushed
A 356 SR



Stainless Steel Colour
Network A 256 NTZ



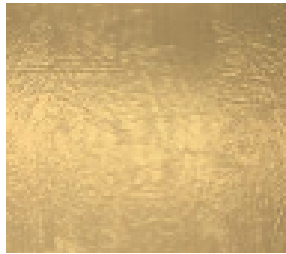
Brushed Black Network
A 234 NTZ



Silver Backing
A 209



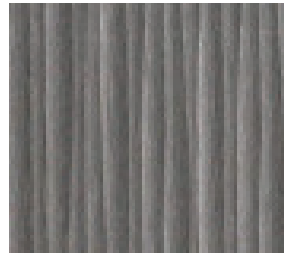
ALUMINUM



Brushed Gold Reed
A 251 SCF



Brushed Stainless Colour
Shaft Large Transverse
A 256 PGQ



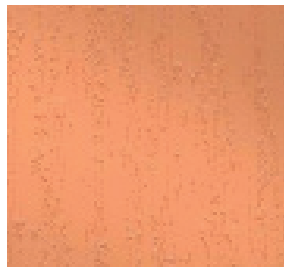
Brushed Stainless Colour
Shaft Small
A 256 PTK



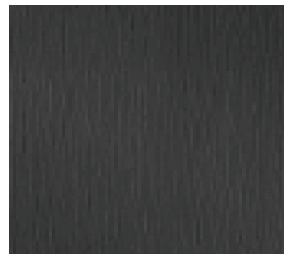
Silver Rondolled
S 296 RON



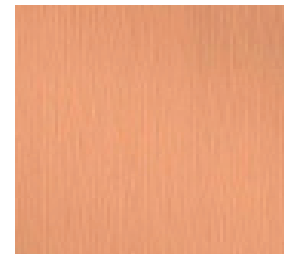
Mirror Blue-Black
Crushed
A 213 617



Mirror Copper Color
Aqua
A 212 AQA



Aluminium Grey Matte
Wood Grain
A 248 HM5

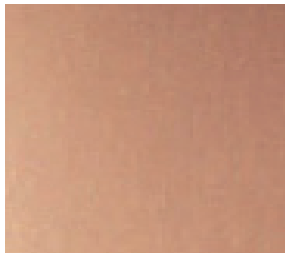


Mirror Copper Wood
Grain
A 212 HM5



COPPER & HAND PAINTED

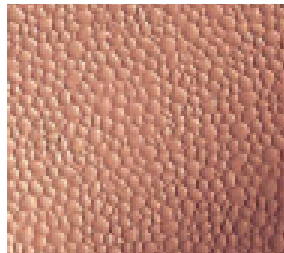
Copper laminates, with selected popular embossed designs, are lacquered and come with clear protective film for ease in processing. Available as flat sheets or with embossed designs.



Matte Copper
C 400



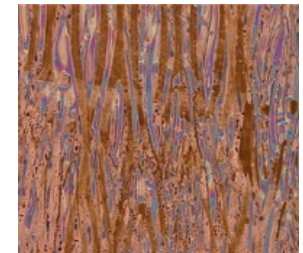
Fine Hammered
Copper
C 471



Hammered Copper
C 473



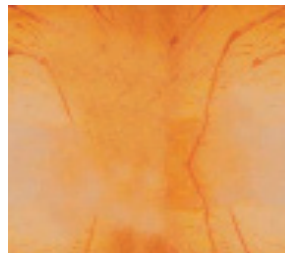
Copper Hand Burnished
C 462



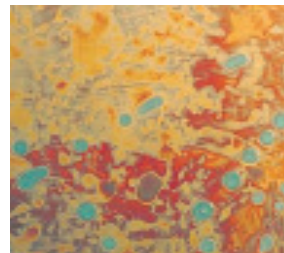
Copper Hand Painted
CA 39



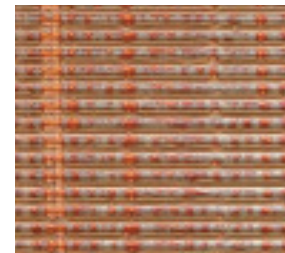
Patina Autumn Leaves
C 421



Patina Onyx
C 412



Patina Malchite
C 414



Madrid
CA5

SPECIAL ORDER ITEMS

Many other design and finish combinations are available for special order.

Special orders require a 12 sheet minimum. Want to choose your own design? Create your own Architectural Metal in just 3 easy steps.

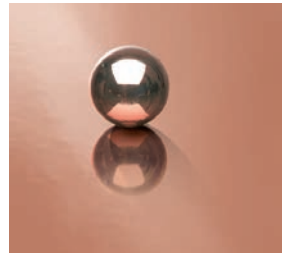
1 Step 1: Choose a finish.



Mirror Silver
A 210



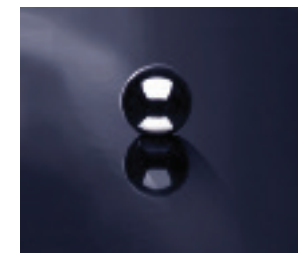
Mirror Gold
A 211



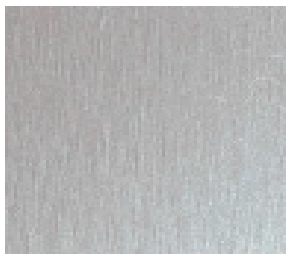
Mirror Copper
A 212



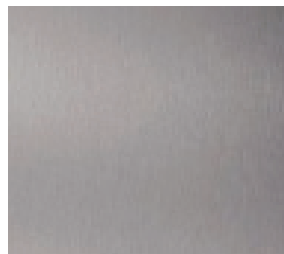
Mirror Grey
A 216



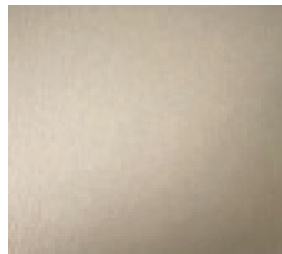
Blue Black Mirror
A 217



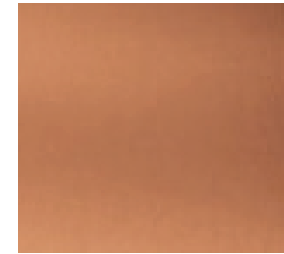
Aluminum Silver
Brushed A 245



Stainless Color Brushed
A 256



Bronze Brushed
A 253



Copper Brushed
A 252

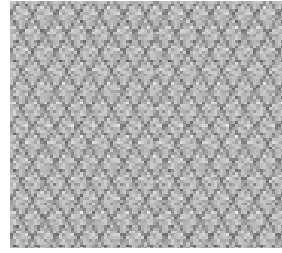
2 Step 2: Choose an embossed design.



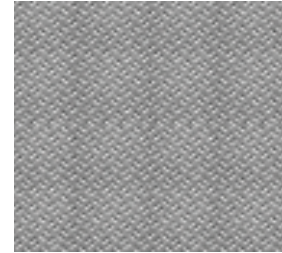
Aqua¹
AQA



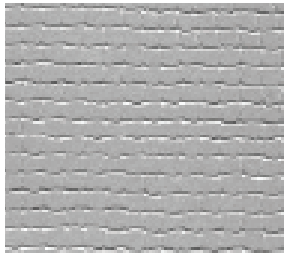
Wide Groove Crosswise
603



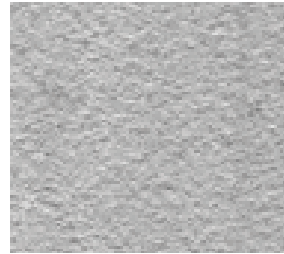
Diamond
DIA



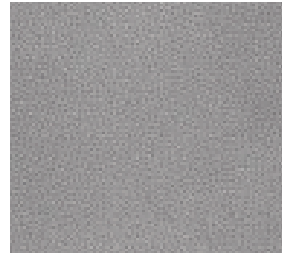
Barley Corn
GEK



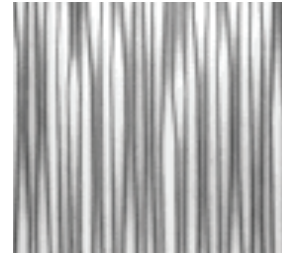
Network
NTZ



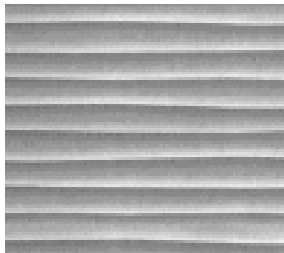
Fine Hammered
HAM



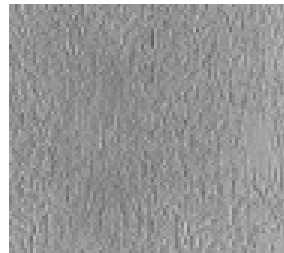
Neptune
NEP



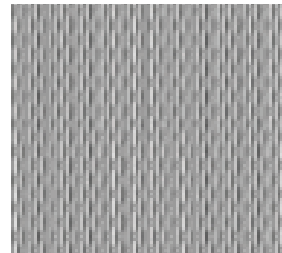
Shaft Small
PTK



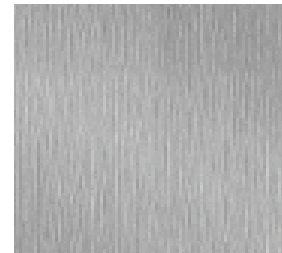
Shaft Large Transverse
PGQ



Bark
BKE



Wafer
WAF



Woodgrain longitudinal
HM5

3



Step 3: Contact a Customer Care Representative to place your order.
Be sure to inquire about additional finishes and designs that may be available for special order.

¹ Aqua is only available in polished finishes

Frequently Asked Questions (FAQs)

You've got questions? We've got answers. **dekodur** is committed to helping you with your Architectural Metal project every step of the way. Please contact us if you have any questions or to request more information.

How about size and thickness?

Thickness: Generally 0,8 mm / 0,9 mm

Copper and Unique Art 1,0 mm -1,5 mm

Mirror quality and magnetic sheet 0,9 mm

Stainless steel 0.8 mm

Polished aluminum surfaces are anodized. Brushed aluminum and copper surfaces are lacquered.

Sheet size is 2440 x 1220 mm and 3050 x 1220 mm.

Minimum order quantity: 12 sheets

For stock items: 1 sheet

How is Architectural Metal fabricated?

Fabricated with the same tools used on any high pressure decorative laminate and bonded to the same type of substrates commonly used in the trade. Special care must be taken to avoid denting the surface with tools or scratching the surface with particles of metal. Carbide-tipped blades and bits are recommended. Dull blades will generate heat and scorch metal.

How are the sheets shipped?

Architectural Metals can be shipped via truck or sea- and airfreight, in wooden crates or rolled for courier shipment, depending on the pattern and size of the order. It is recommended that soon after receipt the sheets should be removed from the container and stored flat so excessive roll set does not take place.

Is there any special treatment required before or after fabrication to ensure longevity of the product?

Anodization produces a hard surface that will not tarnish and has the high abrasion resistance of aluminium (except mirror quality). All products are covered with a clear, peel-off mask to protect the finish. This mask should be left on during fabrication to avoid marring the surface.

How should Architectural Metal be stored?

It is important to store the product flat and not on edge, as storing on edge can cause the sheet to bow

after some time. Metal laminates should be stored face up in a cool, dry area and in a completely supported flat position. Use a top sheet of chipboard or similar material to keep stored sheets flat.

What type of adhesive is recommended?

Any contact cement or cold-set adhesive normally used with decorative laminates is suitable. Avoid adhesive spreading or setup on metallic surface. USE ONLY BENZINE IN ADHESIVE CLEANUP – do not use lacquer solvents or other adhesive solvents, which attack lacquer coatings.

How should metal sheets be cleaned?

Make sure that the cleaning agent used is compatible with either our anodized or lacquered products prior to use. Clean surfaces with a soft cloth using household cleaner, Windex-type solutions, or ordinary soap and water.

Are there any precautions to consider when handling the product?

Metal laminates will conduct electricity and can cause shocks or short circuits when in contact with ungrounded electrical circuits. This product is laminated aluminum, copper, or stainless steel of the highest quality and brilliance. Slight surface imperfections are normal. PLEASE INSPECT CAREFULLY PRIOR TO USE (please refer to DIN EN438-1/9) to ensure the material is suitable for your needs.

Is counterbalancing necessary?

Counterbalancing is necessary as with other High Pressure Laminates to prevent warping of the substrate like wallcoverings, wall panels, ceilings and surfaces.

Is there an option where counterbalancing isn't required?

Yes! The **dekodur** Architectural Metals Collection is available as compact HPL in thickness 4 - 14 mm. For

those compact elements additional counter balancing material is not necessary.

The Art Metals designs have such a variety of metal substrates to choose from. How do I know which substrate to use for my project?

Already know what substrate you want? Great! If not, no worries! Please talk with us about your project and we can help you. Keep in mind that your choice of substrate plays a very critical role in image quality, as well as the look and feel that you want for your project. We can help you find what works best for you.



Check website for updated technical information

dekodur

We are looking forward to your contact!

DI Dekodur International

GmbH & Co. KG

Langenthaler Str. 4

D-69434 Hirschhorn/Neckar

Phone: +49 (0) 6272 / 689-0

Fax: +49 (0) 6272 / 689-30

E-Mail: info@dekodur.de

Web: dekodur.com

Follow us

